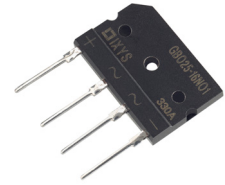
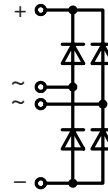


# Single Phase Rectifier Bridge

$I_{dAV} = 25 \text{ A}$   
 $V_{RRM} = 1200-1600 \text{ V}$

$V_{RSM}$ V	$V_{RRM}$ V	Standard Types
1300	1200	GBO 25-12NO1
1700	1600	GBO 25-16NO1



Symbol	Conditions	Maximum Ratings	
$I_{dAVM}$ ①	$T_C = 80^\circ\text{C}$ , sine 180°	25	A
$I_{dAVM}$ ②	$T_C = 25^\circ\text{C}$ , sine 180°	5	A
$I_{FSM}$	$T_{VJ} = 45^\circ\text{C}$ ; $V_R = 0$	t = 10 ms (50 Hz), sine t = 8.3 ms (60 Hz), sine	370 A 390 A
	$T_{VJ} = T_{VJM}$ $V_R = 0$	t = 10 ms (50 Hz), sine t = 8.3 ms (60 Hz), sine	320 A 340 A
$I^2t$	$T_{VJ} = 45^\circ\text{C}$ $V_R = 0$	t = 10 ms (50 Hz), sine t = 8.3 ms (60 Hz), sine	680 A <sup>2</sup> s 640 A <sup>2</sup> s
	$T_{VJ} = T_{VJM}$ $V_R = 0$	t = 10 ms (50 Hz), sine t = 8.3 ms (60 Hz), sine	510 A <sup>2</sup> s 470 A <sup>2</sup> s
$T_{VJ}$		-40...+150	°C
$T_{VJM}$		150	°C
$T_{stg}$		-40...+125	°C
$P_{tot}$		16	W
$M_d$ Weight	Mounting torque (M3) typ.	0.5-0.8 7	Nm g

## Features

- $V_{RRM}$  up to 1600 V
- Low forward voltage drop
- Planar passivated chips
- Low forward voltage drop
- Epoxy meets UL 94V-0

## Applications

- Supplies for DC power equipment
- Input rectifiers for PWM inverter
- Battery DC power supplies
- Field supply for DC motors

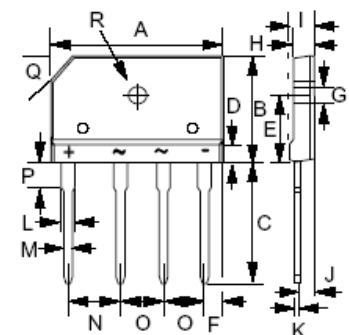
## Advantages

- Easy to mount with one screw
- Space and weight savings

Symbol	Conditions	Characteristic Values	
$I_R$	$V_R = V_{RRM}$ ; $T_{VJ} = 25^\circ\text{C}$	≤	0.05 mA
	$V_R = V_{RRM}$ ; $T_{VJ} = T_{VJM}$	≤	1.5 mA
$V_F$	$I_F = 12.5 \text{ A}$ ; $T_{VJ} = 25^\circ\text{C}$	≤	1.1 V
$V_{T0}$	For power-loss calculations only		0.89 V
$r_T$	$T_{VJ} = T_{VJM}$		12.2 mΩ
$R_{thJC}$	per diode, DC current		4.3 K/W
	per module		1.1 K/W
$R_{thJA}$	per diode, DC current		50 K/W
	per module		12.5 K/W
$d_{S1}, d_{A1}$	Creeping/Striking distance leads to heatsink		2.9 mm
$d_{S1}, d_{A1}$	Creeping/Striking distance lead to lead		5.6 mm
$a$	Max. allowable acceleration		50 m/s <sup>2</sup>

Data according to IEC 60747 and refer to a single diode unless otherwise stated

$I_{dAVM}$  = bridge output current for resistive load ① mounted on heatsink; ② without heatsink



DIM.	MIN.	MAX.
A	29.70	30.30
B	19.70	20.30
C	17.0	18.0
D	4.70	4.90
E	10.80	11.20
F	2.30	2.70
G	3.10	3.40
H	3.40	3.80
I	4.40	4.80
J	2.50	2.90
K	0.60	0.80
L	2.00	2.40
M	0.90	1.10
N	9.80	10.20
O	7.30	7.70
P	3.80	4.20
Q	(3.0) x 45°	
R	3.10 ∅	3.40 ∅
All Dimensions in millimeter		

IXYS reserves the right to change limits, test conditions and dimensions.