

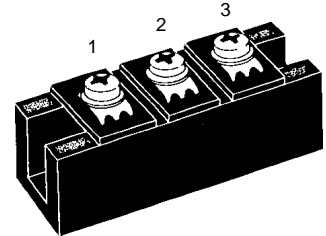
# Fast Recovery Epitaxial Diode (FRED) Module

**MEA 250-12 DA**  
**MEK 250-12 DA**  
**MEE 250-12 DA**

**$V_{RRM} = 1200 V$**   
 **$I_{FAVM} = 260 A$**   
 **$t_{rr} = 450 ns$**

Preliminary data

$V_{RSM}$ V	$V_{RRM}$ V	Type	MEA 250-12DA	MEK 250-12DA	MEE 250-012DA
1200	1200				



Symbol	Test Conditions	Maximum Ratings
$I_{FRMS}$	$T_C = 75^\circ C$	367 A
$I_{FAVM}$ ①	$T_C = 75^\circ C$ ; rectangular, $d = 0.5$	260 A
$I_{FRM}$	$t_p < 10 \mu s$ ; rep. rating, pulse width limited by $T_{VJM}$	1480 A
$I_{FSM}$	$T_{VJ} = 45^\circ C$ ; $t = 10 ms$ (50 Hz), sine	2400 A
	$t = 8.3 ms$ (60 Hz), sine	2640 A
	$T_{VJ} = 150^\circ C$ ; $t = 10 ms$ (50 Hz), sine	2160 A
	$t = 8.3 ms$ (60 Hz), sine	2380 A
$I^2t$	$T_{VJ} = 45^\circ C$ ; $t = 10 ms$ (50 Hz), sine	28800 A <sup>2</sup> s
	$t = 8.3 ms$ (60 Hz), sine	29300 A <sup>2</sup> s
	$T_{VJ} = 150^\circ C$ ; $t = 10 ms$ (50 Hz), sine	23300 A <sup>2</sup> s
	$t = 8.3 ms$ (60 Hz), sine	23800 A <sup>2</sup> s
$T_{VJ}$		-40...+150 °C
$T_{stg}$		-40...+125 °C
$T_{Smax}$		110 °C
$P_{tot}$	$T_c = 25^\circ C$	875 W
$V_{ISOL}$	50/60 Hz, RMS $t = 1 min$	3000 V~
	$I_{ISOL} \leq 1 mA$ $t = 1 s$	3600 V~
$M_d$	Mounting torque (M6)	2.25-2.75/20-25 Nm/lb.in.
	Terminal connection torque (M6)	4.50-5.50/40-48 Nm/lb.in.
$d_s$	Creeping distance on surface	12.7 mm
$d_A$	Strike distance through air	9.6 mm
$a$	Maximum allowable acceleration	50 m/s <sup>2</sup>
<b>Weight</b>		150 g

## Features

- International standard package with DCB ceramic base plate
- Planar passivated chips
- Short recovery time
- Low switching losses
- Soft recovery behaviour
- Isolation voltage 3600 V~
- UL registered E 72873

## Applications

- Antiparallel diode for high frequency switching devices
- Free wheeling diode in converters and motor control circuits
- Inductive heating and melting
- Uninterruptible power supplies (UPS)
- Ultrasonic cleaners and welders

## Advantages

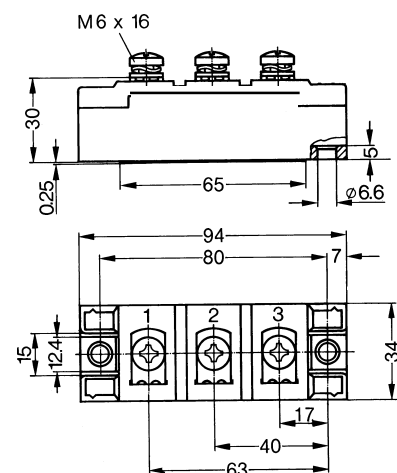
- High reliability circuit operation
- Low voltage peaks for reduced protection circuits
- Low noise switching
- Low losses

Symbol	Test Conditions	Characteristic Values (per diode)			
		typ.	max.		
$I_R$	$T_{VJ} = 25^\circ C$ $V_R = V_{RRM}$	12	mA		
	$T_{VJ} = 25^\circ C$ $V_R = 0.8 \cdot V_{RRM}$	3	mA		
	$T_{VJ} = 125^\circ C$ $V_R = 0.8 \cdot V_{RRM}$	60	mA		
$V_F$	$I_F = 150 A$ ; $T_{VJ} = 125^\circ C$	1.38	V		
	$T_{VJ} = 25^\circ C$	1.69	V		
	$I_F = 260 A$ ; $T_{VJ} = 125^\circ C$	1.54	V		
	$T_{VJ} = 25^\circ C$	1.80	V		
$V_{TO}$	For power-loss calculations only	1.16	V		
$r_T$		1.46	mΩ		
$R_{thJH}$	DC current	0.228	K/W		
$R_{thJC}$	DC current	0.143	K/W		
$t_{rr}$ $I_{RRM}$	$I_F = 300 A$ $V_R = 600 V$ $-di/dt = 400 A/\mu s$	450	$T_{VJ} = 100^\circ C$	500	ns
			$T_{VJ} = 25^\circ C$	55	A
			$T_{VJ} = 100^\circ C$	83	A

①  $I_{FAVM}$  rating includes reverse blocking losses at  $T_{VJM}$ ,  $V_R = 0.6 V_{RRM}$ , duty cycle  $d = 0.5$   
Data according to IEC 60747

IXYS reserves the right to change limits, test conditions and dimensions

## Dimensions in mm (1 mm = 0.0394")



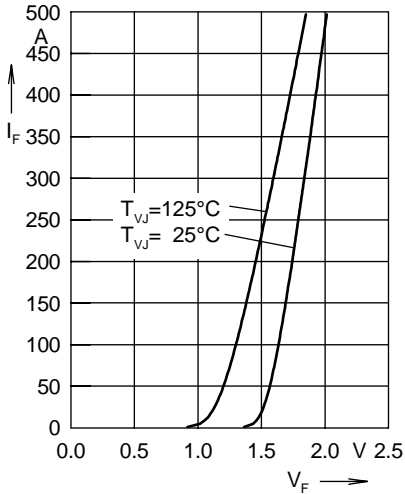


Fig. 1 Forward current  $I_F$  versus voltage drop  $V_F$  per leg

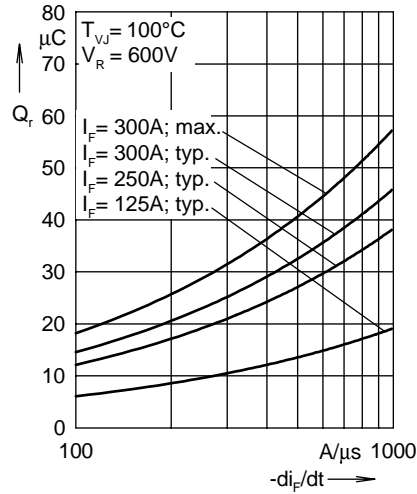


Fig. 2 Reverse recovery charge  $Q_r$  versus  $-di_F/dt$

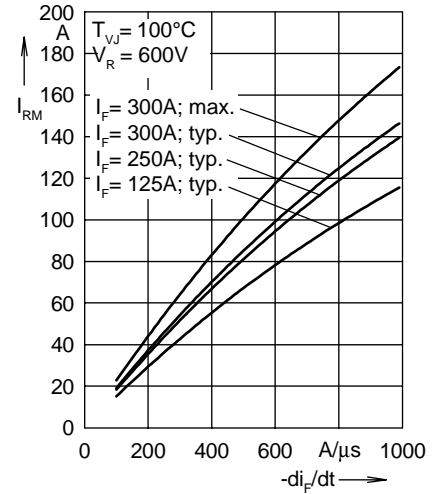


Fig. 3 Peak reverse current  $I_{RM}$  versus  $-di_F/dt$

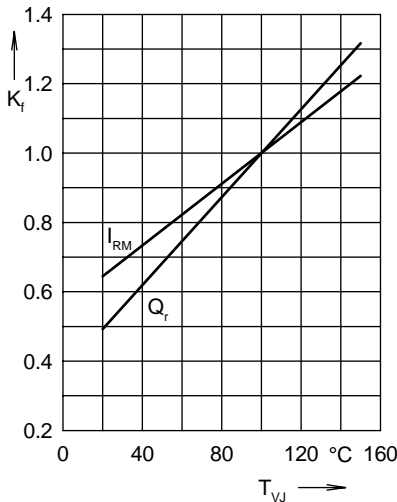


Fig. 4 Dynamic parameters  $Q_r$ ,  $I_{RM}$  versus junction temperature  $T_{VJ}$

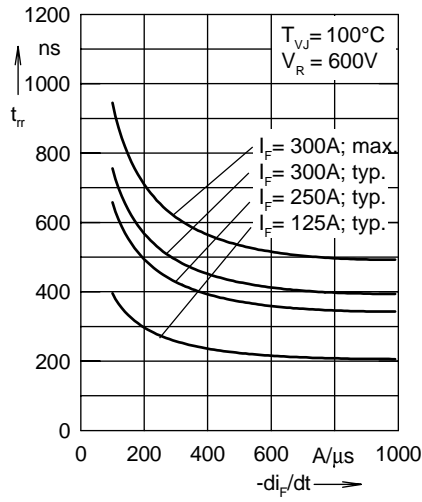


Fig. 5 Recovery time  $t_{tr}$  versus  $-di_F/dt$

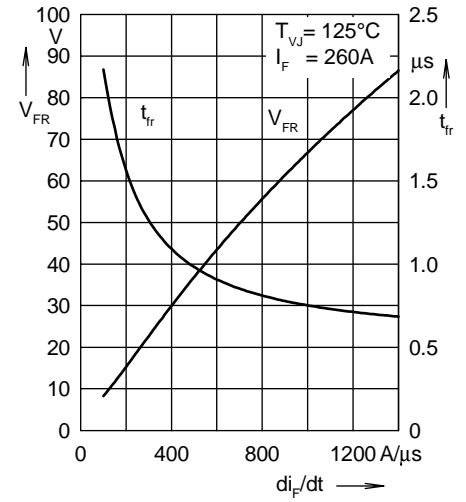


Fig. 6 Peak forward voltage  $V_{FR}$  and  $t_{tr}$  versus  $di_F/dt$

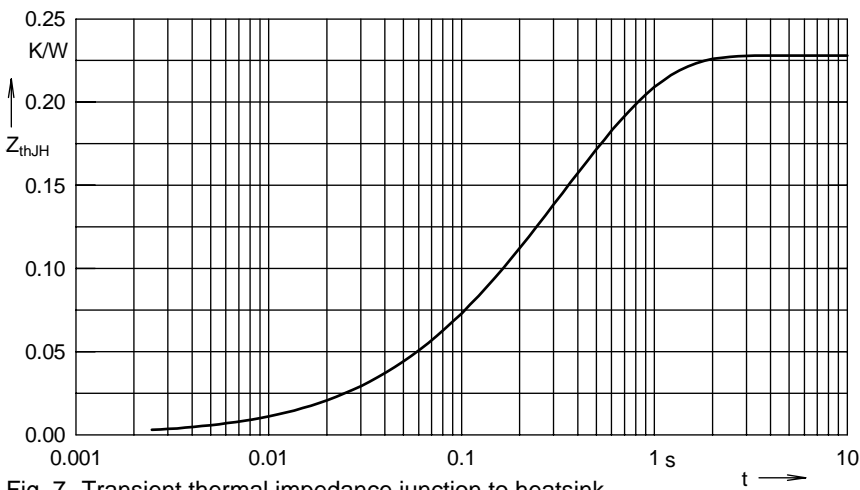


Fig. 7 Transient thermal impedance junction to heatsink

Constants for  $Z_{thjS}$  calculation:

i	$R_{thi}$ (K/W)	$t_i$ (s)
1	0.002	0.08
2	0.008	0.024
3	0.054	0.112
4	0.164	0.464