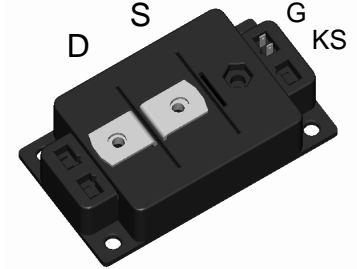
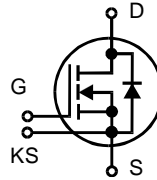


# HipPerFET™ Module

## VMO 580-02F

$V_{DSS} = 200 \text{ V}$   
 $I_{D25} = 580 \text{ A}$   
 $R_{DS(on)} = 3.8 \text{ m}\Omega$

N-Channel Enhancement Mode



### Preliminary Data

MOSFET			
Symbol	Conditions	Maximum Ratings	
$V_{DSS}$	$T_{VJ} = 25^\circ\text{C to } 150^\circ\text{C}$	200	V
$V_{GS}$		$\pm 20$	V
$I_{D25}$	$T_C = 25^\circ\text{C}$	580	A
$I_{D80}$	$T_C = 80^\circ\text{C}$	430	A
$I_{F25}$	(diode) $T_C = 25^\circ\text{C}$	580	A
$I_{F80}$	(diode) $T_C = 80^\circ\text{C}$	430	A

### Features

- HiPerFET™ technology
  - low  $R_{DS(on)}$
  - dv/dt ruggedness
  - fast intrinsic reverse diode
- package
  - low inductive current path
  - screw connection to high current main terminals
  - use of non interchangeable connectors for auxiliary terminals possible
  - Kelvin source terminals for easy drive
  - isolated ceramic base plate

Symbol	Conditions	Characteristic Values ( $T_{VJ} = 25^\circ\text{C}$ , unless otherwise specified)		
		min.	typ.	max.
$R_{DS(on)}$	$V_{GS} = 10 \text{ V}; I_D = I_{D80}$		3.2	3.8 m $\Omega$
$V_{GS(th)}$	$V_{DS} = 20 \text{ V}; I_D = 50 \text{ mA}$	2		4 V
$I_{DSS}$	$V_{DS} = 0.8 \cdot V_{DSS}; V_{GS} = 0 \text{ V}; T_{VJ} = 25^\circ\text{C}$ $T_{VJ} = 125^\circ\text{C}$		3	2.6 mA mA
$I_{GSS}$	$V_{GS} = \pm 20 \text{ V}; V_{DS} = 0 \text{ V}$			1 $\mu\text{A}$
$Q_g$ $Q_{gs}$ $Q_{gd}$	} $V_{GS} = 10 \text{ V}; V_{DS} = 0.5 \cdot V_{DSS}; I_D = I_{D80}$		2750	nC
			500	nC
			1350	nC
$t_{d(on)}$ $t_r$ $t_{d(off)}$ $t_f$	} $V_{GS} = 10 \text{ V}; V_{DS} = 0.5 \cdot V_{DSS};$ $I_D = I_{D80}; R_G = 1 \Omega$		210	ns
			500	ns
			900	ns
			350	ns
$V_F$	(diode) $I_F = 300 \text{ A}; V_{GS} = 0 \text{ V}$		0.9	1.1 V
$t_{rr}$	(diode) $I_F = 300 \text{ A}; -di/dt = 500 \text{ A}/\mu\text{s}; V_{DS} = \frac{1}{2} V_{DSS}$		300	ns
$R_{thJC}$ $R_{thJS}$	with heat transfer paste		0.07	0.05 K/W K/W

### Applications

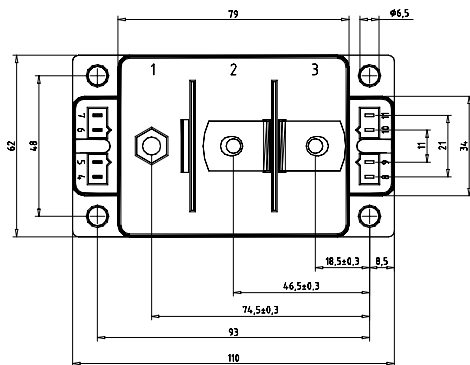
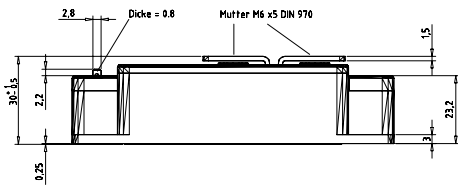
- converters with high power density for
  - main and auxiliary AC drives of electric vehicles
  - DC drives
  - power supplies

## Module

Symbol	Conditions	Maximum Ratings	
$T_{VJ}$		-40...+150	°C
$T_{stg}$		-40...+125	°C
$V_{ISOL}$	$I_{ISOL} \leq 1 \text{ mA}; 50/60 \text{ Hz}$	3600	V~
$M_d$	Mounting torque (M6)	2.25 - 2.75	Nm
	Terminal connection torque (M6)	4.5 - 5.5	Nm

Symbol	Conditions	Characteristic Values		
		min.	typ.	max.
Weight		250		g

### Dimensions in mm (1 mm = 0.0394")



### Optional accessories for modules

keyed twin plugs  
(UL758, style 1385, CSA class 5851,  
guide 460-1-1)

- Type ZY180L with wire length 350mm  
– for pins 4 (yellow wire) and 5 (red wire)  
– for pins 11 (yellow wire) and 10 (red wire)
- Type ZY180R with wire length 350mm  
– for pins 7 (yellow wire) and 6 (red wire)  
– for pins 8 (yellow wire) and 9 (red wire)